

UC50MPB

Spinel 5 MP USB Camera Module with Aptina MT9P001



UC50MPB-Features

5 MP Resolution with Aptina MT9P001

Plug-&-Play (UVC compliant)

USB 2.0 device with USB 2.0 cable

Specifications

Image Device	1/2.5" Aptina MT9P001		
Pixel Size	2.2 μ m x 2.2 μ m		
Resolution	5 MP 2592(H) X 1944(V)		
Output Format	MJPEG / YUV2 (YUYV)		
Shutter Type	Electronic rolling shutter		
Focus	Manually adjustable		
Protocol & Connection	Plug-&-Play (UVC compliant)		
Frame Rate	320X240	MJPEG @30fps	YUV2 @ 30fps
	640X480	MJPEG @30fps	YUV2 @ 30fps
	800X600	MJPEG @30fps	YUV2 @ 20fps
	1024X768	MJPEG @30fps	YUV2 @ 10fps
	1280X960	MJPEG @15fps	YUV2 @ 10fps
	1280X1024	MJPEG @10fps	YUV2 @ 10fps
	1600x1200	MJPEG @15fps	YUV2 @ 5fps
	2048x1536	MJPEG @15fps	YUV2 @ 4fps
	2592x1944	MJPEG @15fps	YUV2 @ 2fps
Minimum Illumination	0.5 Lux		
IR-Cut Filter (IR Filter)	Default at 650nm, custom options at 850nm or 940nm		
Lens	Default 120 degree FOV non-distortion lens , other options M12 2.1mm, 3.6mm, 6mm, 8mm, 12mm, 16mm, 185 Degree circular Fisheye, CS 2.8mm, 4mm, 6mm, 8mm, 16mm, 25mm lens.		
Night Vision	Supported with use of IR Lens and IR illuminator		

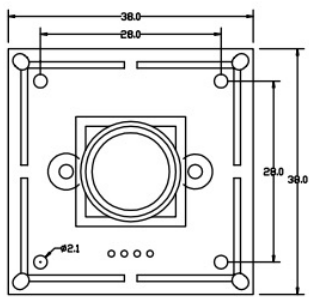
For more information relating to cameras, please contact us, via email at info@spinelectronics.com

Or by phone at 800-837-5859; or visit our Website: www.spinelectronics.com

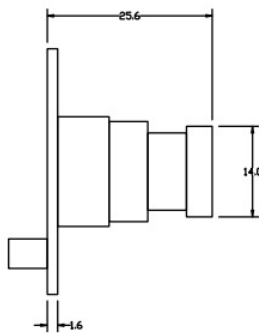
Controllable Features	Brightness, Contrast, Saturation, Hue, Sharpness, Gamma, White balance, Backlight Contrast, Exposure
IR Illumination	Default not available, 12 or 24pcs 850nm LED plate can be added upon request
Power Socket	4P PH 2.0mm socket, USB BUS Power
Cable Length	Default 4ft(1.2M) (optional 2M or others upon request)
Supported OS	Win XP/Vista/Win7/Win8/Win10 Linux with UVC (linux-2.6.26 or later) MAC-OS X 10.4.8 or later Wince with UVC Android 4.0 or higher with UVC

Environmental	
Power Consumption	DC5V (±5%), 150~200mA
Operating Temp.	-4°F~167°F (-20°C~+75°C)
Storage Temp.	-40°F~185°F (-40°C~+85°C)
Humidity	Less than 80%
Dimension in Millimeters	38mmx 38mm (Mount compatible with 32 x 32mm)
Weight	Approx. 12 Grams or 0.4 Ounce

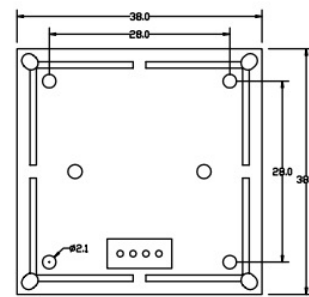
Board Layout (Dimensions in mm)



Front View



Side View

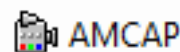


Back View

Pin Configuration (shown on back view image above, from left to right)

Pin 1	Pin 2	Pin 3	Pin 4
DC 5V In	DM	DP	GND

Windows Testing Application - AMCAP



1. The "AMCAP" can be downloaded from Spinel site:
2. For preview, please select the camera first, then go to Options--->Preview
3. To change resolution, please go to AMCAP--->Options--->Video Capture Pin

For more information relating to cameras, please contact us, via email at info@spinelectronics.com
Or by phone at 800-837-5859; or visit our Website: www.spinelectronics.com