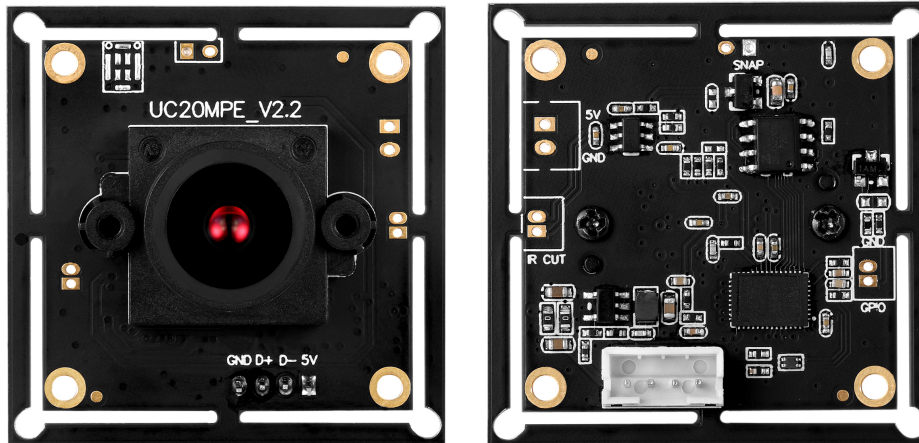


UC20MPE_V2_HF

Spinel 2 Mega Pixels High Frame Rate USB Camera Module



UC20MPE_V2_HF-Features

2 MP Resolution

Plug-&-Play (UVC compliant), USB 2.0 device with USB 2.0 cable

High Frame rate 1080P at 60fps

Specifications

Image Device	1/2.7" CMOS PS5260		
Pixel Size	3 μ m x 3 μ m		
Resolution	2 MP FULL HD 1920(H) X 1080(V)		
Output Format	MJPEG / YUV2 (YUYV)		
Shutter Type	Electronic rolling shutter		
Focus	Manually adjustable		
Focusing Range	20mm to Infinity		
Protocol & Connection	Plug-&-Play (UVC compliant)		
Frame Rate (Max.)	320 x 240	MJPEG @ 60fps	YUV2 @ 30fps
	352 x 288	MJPEG @ 60fps	YUV2 @ 30fps
	640 x 360	MJPEG @ 60fps	YUV2 @ 30fps
	640 x 480	MJPEG @ 60fps	YUV2 @ 30fps
	800 x 600	MJPEG @ 60fps	YUV2 @ 15fps
	848 x 480	MJPEG @ 60fps	YUV2 @ 15fps
	960 x 540	MJPEG @ 60fps	YUV2 @ 15fps
	1024 x 768	MJPEG @ 60fps	YUV2 @ 10fps
	1280 x 720	MJPEG @ 60fps	YUV2 @ 10fps
	1280 x 800	MJPEG @ 60fps	YUV2 @ 10fps
	1920 x 1080	MJPEG @ 60fps	YUV2 @ 5fps

For more information relating to cameras, please contact us, via email at info@spinelectronics.com
Or by phone at 800-837-5859; or visit our Website: www.spinelectronics.com

Minimum Illumination	0.05 Lux
WDR	83dB
IR-Cut Filter (IR Filter)	Default at 650nm, custom options no IR filter
Lens	Default 3.6mm lens , Custom options M12 2.1mm, 2.8mm, 6mm, 8mm, 12mm, 16mm, 25mm, 100 degree FOV non-distortion lens,185 Degree Fisheye, Pin-hole 2.8mm, 3.7mm, 4.3mm and CS Lens
IR-Cut Filter Switch (IRC)	Available upon request
Night Vision	Supported with use of IR lens and IR illuminator
IR Illumination	Default not available, 4 or 10pcs 850nm IR LED board can be added upon request
Controllable Features	Brightness, Contrast, Saturation, Hue, Sharpness, Gamma, White balance, Backlight Contrast, Exposure
Power Socket	4P PH 2.0mm socket, USB BUS Power
Cable Length	Default 1.2M (Other options upon request)
Supported OS	Win XP/Vista/Win7/Win8/Win10 Linux with UVC (linux-2.6.26 or later) MAC-OS X 10.4.8 or later Wince with UVC Android 4.0 or higher with UVC

Environmental	
Power Consumption	DC5V (±5%), 80~120mA
Operating Temp.	-4°F~167°F (-20°C~+75°C)
Storage Temp.	-40°F~185°F (-40°C~+85°C)
Humidity	Less than 80%
Dimension in Millimeters	38mmx 38mm (Mount compatible with 32 x 32mm)
Weight	Approx. 12Grams or 0.4Ounce

Windows Testing Application - AMCAP



1. The "AMCAP" can be downloaded from Spinel site:
2. For preview, please select correct camera device.
3. To change resolution, go to Options--> video device -->capture format.

For more information relating to cameras, please contact us, via email at info@spinelectronics.com
Or by phone at 800-837-5859; or visit our Website: www.spinelectronics.com