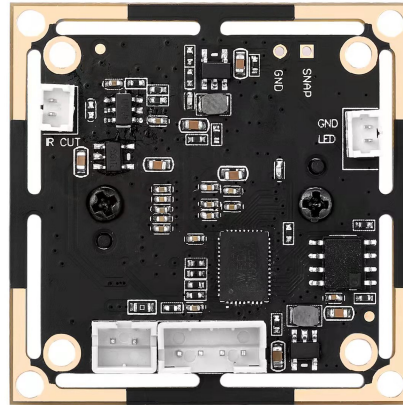
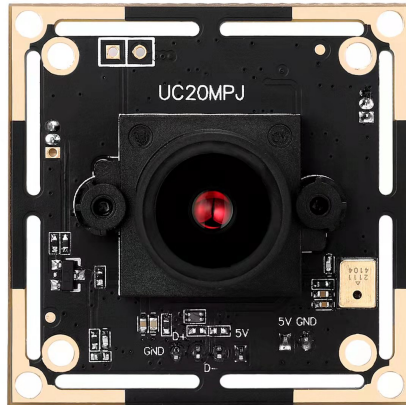


UC20MPJ

Spinel 2 MP Ultra Low Light USB Camera Module with IMX462



UC20MPJ-Features

2 MP Resolution, ultra low light 0.0005lux

Plug-&-Play (UVC compliant)

USB 2.0 device with USB 2.0 cable

Specifications

Image Device	1/2.8" CMOS Sony IMX462		
Pixel Size	2.9µm x 2.9µm		
Resolution	2 MP FULL HD 1920(H) X 1080(V)		
Output Format	MJPEG / YUV2(YUYV)		
Shutter Type	Electronic rolling shutter		
Focus	Manually adjustable		
Focusing Range	20mm to Infinity		
Protocol & Connection	Plug-&-Play (UVC compliant)		
Frame Rate (Max)	320X240	MJPEG @30fps	YUV2 @30fps
	352X288	MJPEG @30fps	YUV2 @30fps
	640X360	MJPEG @30fps	YUV2 @30fps
	640X480	MJPEG @30fps	YUV2 @30fps
	848X480	MJPEG @30fps	YUV2 @15fps
	800X600	MJPEG @30fps	YUV2 @15fps
	1024X768	MJPEG @30fps	YUV2@10fps
	1280X720	MJPEG @30fps	YUV2 @10fps
	1280X800	MJPEG @30fps	YUV2 @10fps
	1280X1080	MJPEG @30fps	YUV2 @5fps
Minimum Illumination	0.0005 Lux		
WDR	63 db		
IR-Cut Filter (IR Filter)	Default at 650nm		
Lens	Default 4mm F1.6 , Custom options 2.1mm F1.8, 2.8mm F1.8, 2.8mm F1.0 , 4.0mm F1.0 , 6mm F1.6, 8mm F1.6,		

For more information relating to cameras, please contact us, via email at info@spinelectronics.com
Or by phone at 800-837-5859; or visit our Website: www.spinelectronics.com

	12mm F1.6 16mm F1.6, 25mm F2.0, 100 degree FOV non-distortion lens, Pin-hole 2.8mm, 3.7mm, 4.3mm lens, 185 Degree Fisheye, CS lens and others upon request
IR-Cut Filter Switch (IRC)	Available upon request
Night Vision	Supported with use of IR lens and IR illuminator
Controllable Features	Brightness, Contrast, Saturation, Hue, Sharpness, Gamma, White balance, Backlight Contrast, Exposure
IR Illumination	Default not available, 4 or 10pcs 850nm IR LED board can be added upon request
Power Socket	4P PH 2.0mm socket, USB BUS Power
Cable Length	Default 1.2M (optional 76CM, 2M, 3M, 5M or others upon request)
Supported OS	Win XP/Vista/Win7/Win8/Win10 Linux with UVC (linux-2.6.26 or later) MAC-OS X 10.4.8 or later Wince with UVC Android 4.0 or higher with UVC

Environmental	
Power Consumption	DC5V (±5%), <120mA
Operating Temp.	-4°F~185°F (-20°C~+85°C)
Storage Temp.	-40°F~185°F (-40°C~+85°C)
Humidity	Less than 80%
Dimension in Millimeters	38mmx 38mm (Mount compatible with 32 x 32mm)
Weight	Approx. 12Grams or 0.4Ounce

Windows Testing Application – AMCAP



1. The “AMCAP” can be downloaded from Spinel site:
2. For preview, please select correct camera device.
3. To change resolution, go to Options--> video device -->capture format.